



FRAPP

K A R L F R I E D R I C H R A P P



FRAPP

KARL FRIEDRICH RAPP

The FRAPP NOx Sensor



FRAPP Friedrichrapp GmbH is introducing the FRAPP NOx Sensor engine management and exhaust after treatment systems. Our sensor stands as a symbol of our commitment to precision, performance, and compliance with the highest global emission standards.

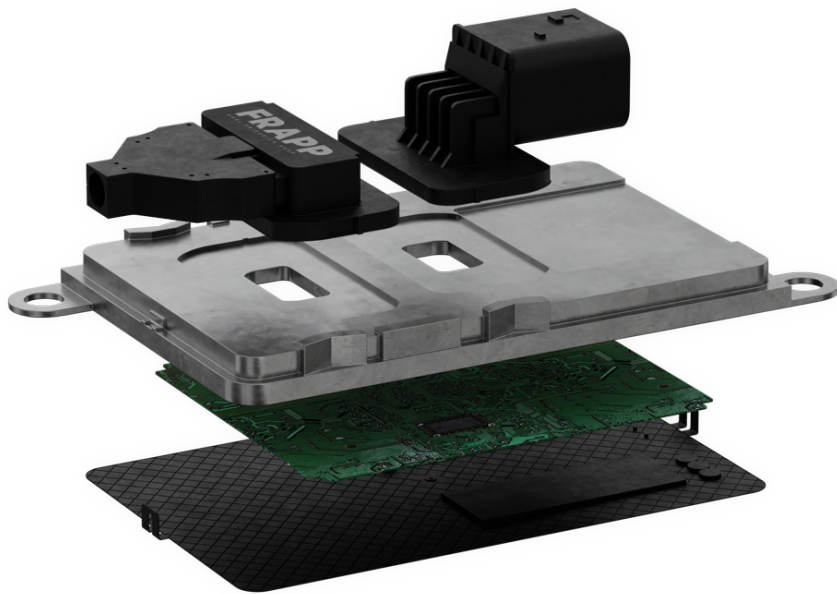
Our FRAPP NOx Sensor delivers real-time, highly accurate measurements. It forms a key component in state-of-the-art engine management and exhaust aftertreatment systems, providing vital data for efficient operation and environmental compliance.

Continual improvement is at the heart of our mission. Our sensor is constantly refined to meet and exceed emission standards across the globe, including the EU, North America, Japan, and China.



FRAPP

KARL FRIEDRICH RAPP



Our sensor guarantees precise NO_x measurements, offering ± 10 ppm accuracy for NO concentrations less than 100 ppm, and $\pm 10\%$ accuracy for concentrations above 100 ppm.

Compatible with both 12V and 24V power supply systems, our sensor is designed for seamless integration into a wide range of vehicles and machinery.



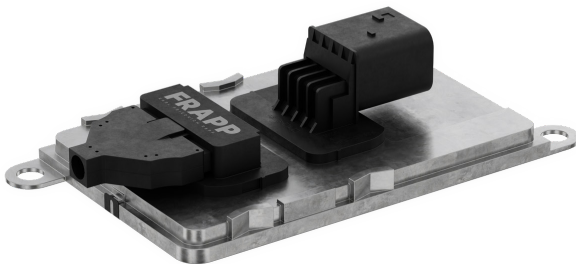


FRAPP

KARL FRIEDRICH RAPP

Technical Information

Experience a leap forward in automotive technology with FRAPP's state-of-the-art NOx Sensor. Designed to deliver real-time, high-accuracy measurements, this device is a game changer for any vehicle. It's not just a component—it's the future of sustainable and efficient driving.



Measuring Principle

Based on a Zirconium Dioxide (ZrO_2) multilayer sensor, equipped with an integrated heater. This ensures reliable and accurate measurements, regardless of operating conditions.



Output Signals

The sensor provides versatile output signals, including NOx, λ_{bin} , λ_{lin} , or $\text{O}_2\text{-conc.}$, catering to various system requirements.



Data Link

Our sensor supports CAN 2.0 and SAE-J-1939 data links, facilitating easy integration with various system architectures.



Operating Gas Temperature

Sensor performs optimally in extreme conditions, with an operating gas temperature range from 100°C up to 800°C .



FRAPP

KARL FRIEDRICH RAPP

The FRAPP Company

At FRAPP Friedrichrapp GmbH, we stand at the forefront of the global mobility sector, expertly crafting spare parts of original quality for a multitude of needs. As a specialist in Original Equipment (OE) quality and aftermarket solutions, we leverage our deep-rooted knowledge and industry experience to ensure a worldwide supply of high-quality spare parts.

Our journey is guided by the innovative spirit and historical insights of Karl Friedrich Rapp, one of the automotive industry's pioneering figures. Drawing inspiration from his visionary outlook, we continuously strive to bring innovation to the truck aftermarket parts sector.

Our commitment to quality, innovation, and worldwide service has propelled us to the top echelons of the industry, cementing our reputation as a reliable partner for mobility solutions. At FRAPP Friedrichrapp GmbH, we don't just produce spare parts,

We contribute to the evolution of global mobility, one innovative solution at a time.

FRAPP Friedrichrapp GmbH

Petuelring 135,
80809 Munchen
Germany

T: +49 1525 9545031

M: office@friedrichrapp.com

W: www.friedrichrapp.com



Karl Friedrich Rapp

Karl Friedrich Rapp holds an esteemed place in the annals of automotive history. His remarkable journey and contributions to the industry continue to inspire us at FRAPP Friedrichrapp GmbH, serving as a beacon guiding our pursuit of excellence and innovation.

Rapp began his career in the early 20th century as an aircraft engineer. His entrepreneurial spirit and inventive mind led him to establish Rapp Motorenwerke in 1913, which eventually laid the groundwork for BMW, one of the world's most recognized and respected automobile and motorcycle manufacturers.

Rapp's engineering prowess and visionary leadership were instrumental in transforming the landscape of the automotive industry. His dedication to innovation and quality, paired with an unrelenting commitment to excellence, set new standards for performance and design in the industry.

At FRAPP Friedrichrapp GmbH, we uphold Rapp's legacy, infusing his values and spirit into our work. His name stands as a symbol of our commitment to innovation, quality, and excellence – the pillars that guide our operations and define our contribution to the automotive world.